



# Student Retention and Loss Prevention

Matthew Lang: Principal, Digital Transformation

Spencer Lourens: Data Science Manager, Digital Transformation

WEALTH ADVISORY | OUTSOURCING | AUDIT, TAX, AND CONSULTING

Investment advisory services are offered through CliftonLarsonAllen Wealth Advisors, LLC, an SEC-registered investment advisor

# Disclaimer

*The information contained herein is general in nature and is not intended, and should not be construed, as legal, accounting, or tax advice or opinion provided by CliftonLarsonAllen LLP to the user. The user also is cautioned that this material may not be applicable to, or suitable for, the user's specific circumstances or needs, and may require consideration of non-tax and other tax factors if any action is to be contemplated. The user should contact his or her CliftonLarsonAllen LLP or other tax professional prior to taking any action based upon this information. CliftonLarsonAllen LLP assumes no obligation to inform the user of any changes in tax laws or other factors that could affect the information contained herein.*



# Learning Objectives

- Recognize the Early Warning Indicator (EWI) Systems and learn how colleges and universities are beginning to utilize them
- Identify, at a high-level, how an EWI System can be created, deployed, and utilized at colleges and universities
- Identify how to introduce tangible action items to jumpstart an EWI System at your college or university



# Agenda

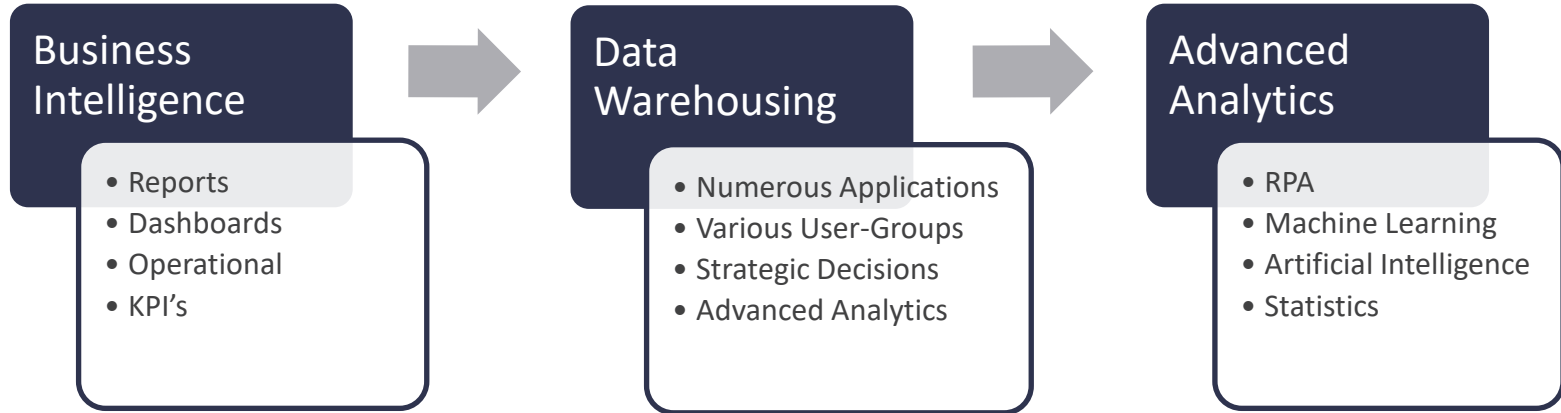
- Introductions
- Data and Analytics: What is it?
- Potential Use-Cases in Higher Education
- What are Early Warning Indicator Systems?
- Why are Early Warning Indicator Systems utilized?
- How are Early Warning Indicator Systems deployed?
- Examples
- Q and A







# Data and Analytics: What is it?





# Data and Analytics Use-Cases in Higher Education

- Leadership Dashboard
- Probability Modeling
- Mergers and Acquisitions
- Continuous Alumni/Student Engagement
- Student Financial Aid Compliance
- Financial Aid Matrix
- Early Warning Indicator Systems





# What are Early Warning Indicator Systems?

- Broader than Higher Education
- History of EWI's
- Data-Driven
- Student-Level, At-Risk Predictions



# Why Early Warning Indicator Systems?

- Increase student retention and graduation rates
- Promote social and emotional learning in colleges and universities
- Grow student engagement
- Generate more meaningful dialogue between students and administration
- Improve academic performance
- Assists colleges and universities in achieving their mission



# How to Deploy Early Warning Indicator Systems?



- Use discrete stages to set up for long term delivery success
- Provide consistent service across clients, with ability to meet client specific needs



# How to Deploy Early Warning Indicator Systems?

- Planning and envisioning
  - Introductions, discuss fields collected / of Interest
  - Existing hypotheses from the field
- Data transfer: meet our clients where you are
  - Manual data hand off
  - Semi automated data pipeline
  - Scheduled data refresh



# How to Deploy Early Warning Indicator Systems?

- Model building and app loading
  - Using historical data, data science team explores and models the data
  - Data science team loads data into data product application
  - Data Science team deploys (in CLA environment or client environment)
- Maintenance and refresh
  - App maintenance performed at CLA/client discretion
  - Data refreshed on schedule to be determined – discuss improvements to data transfer, etc.
  - Discuss need / desire for additional views, add-ons to data product

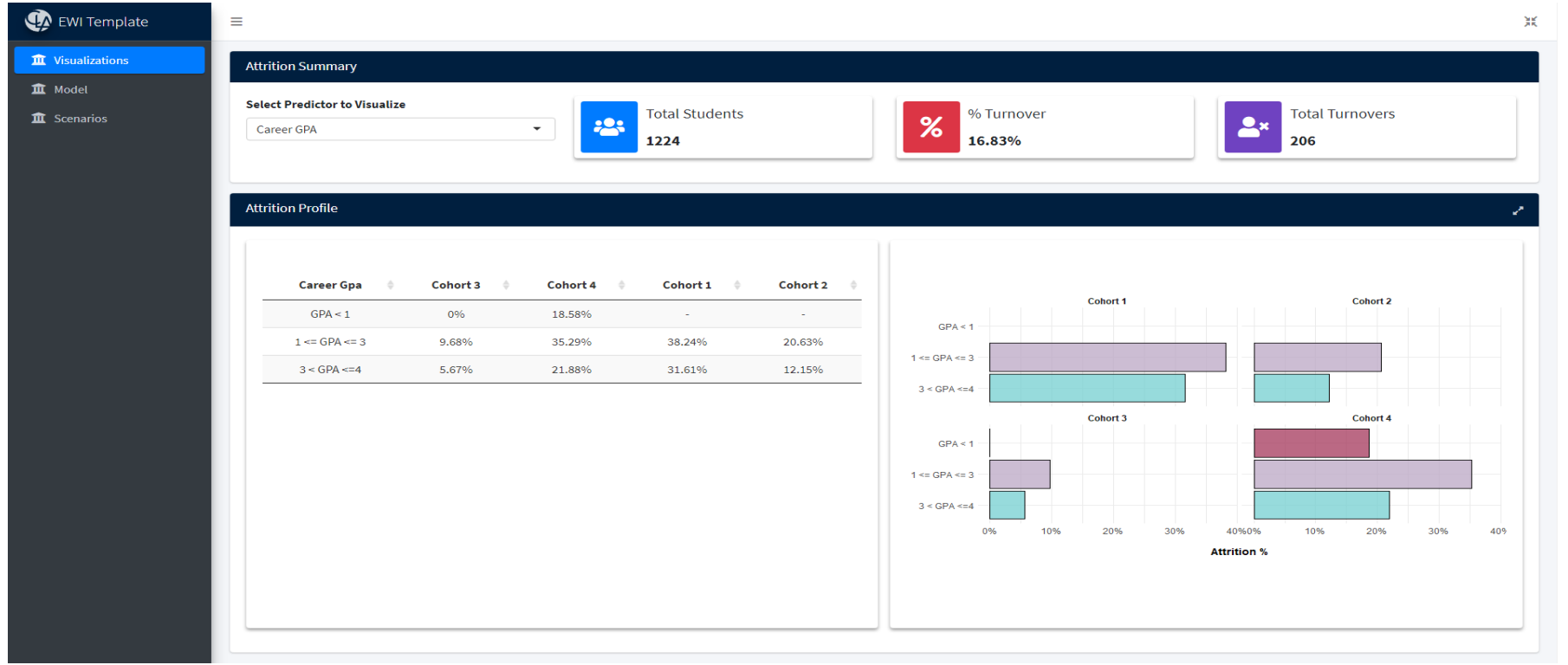


# Examples

- Early Warning Indicator System Template
- Three Views
  - Visualization
    - Understand the impact of most important predictors of attrition, identified by machine learning
  - Model Insights
    - Deep dive into the machine learning model, including individualized explanations of why the model identified students as high/low risk
  - Scenario Modeling
    - Define criteria for successful intervention campaigns based on deflecting most important predictors of attrition

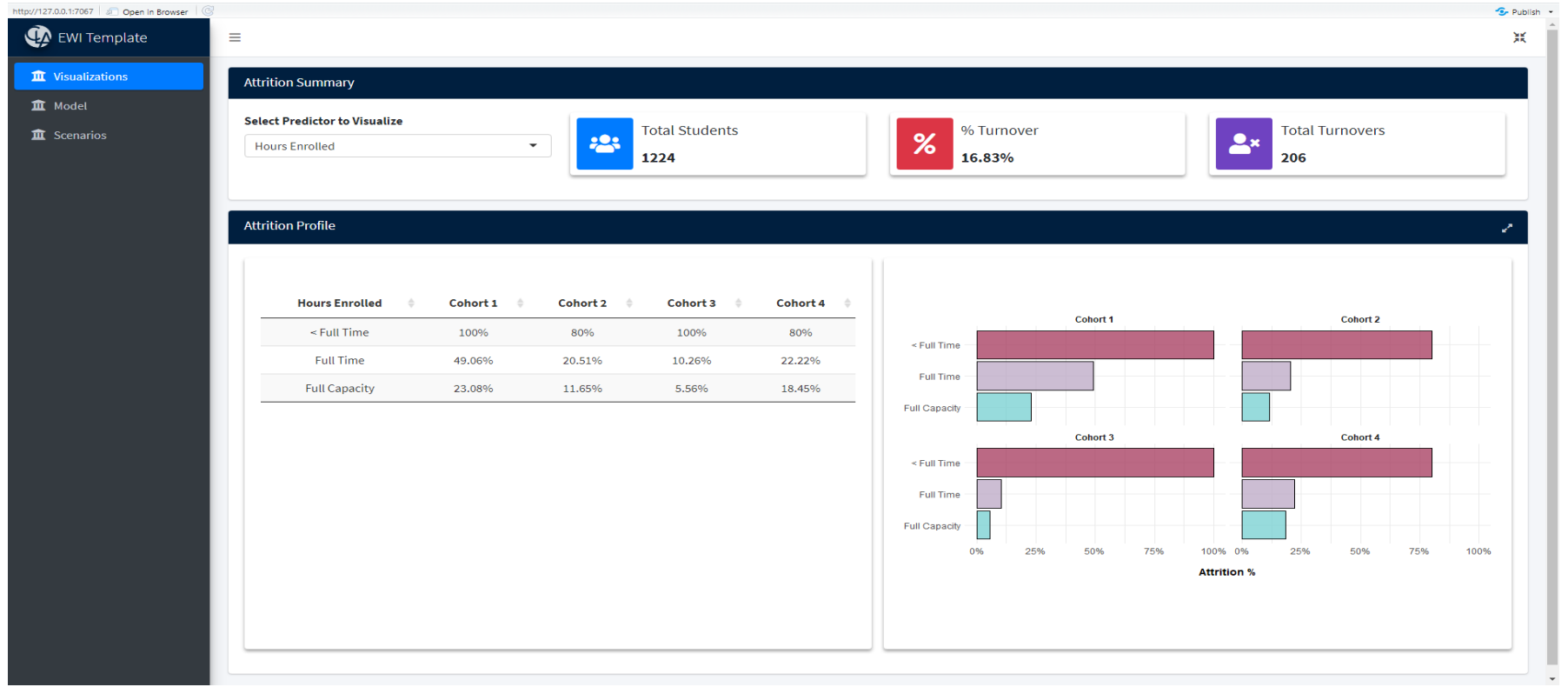


# Examples: Visualization Tab

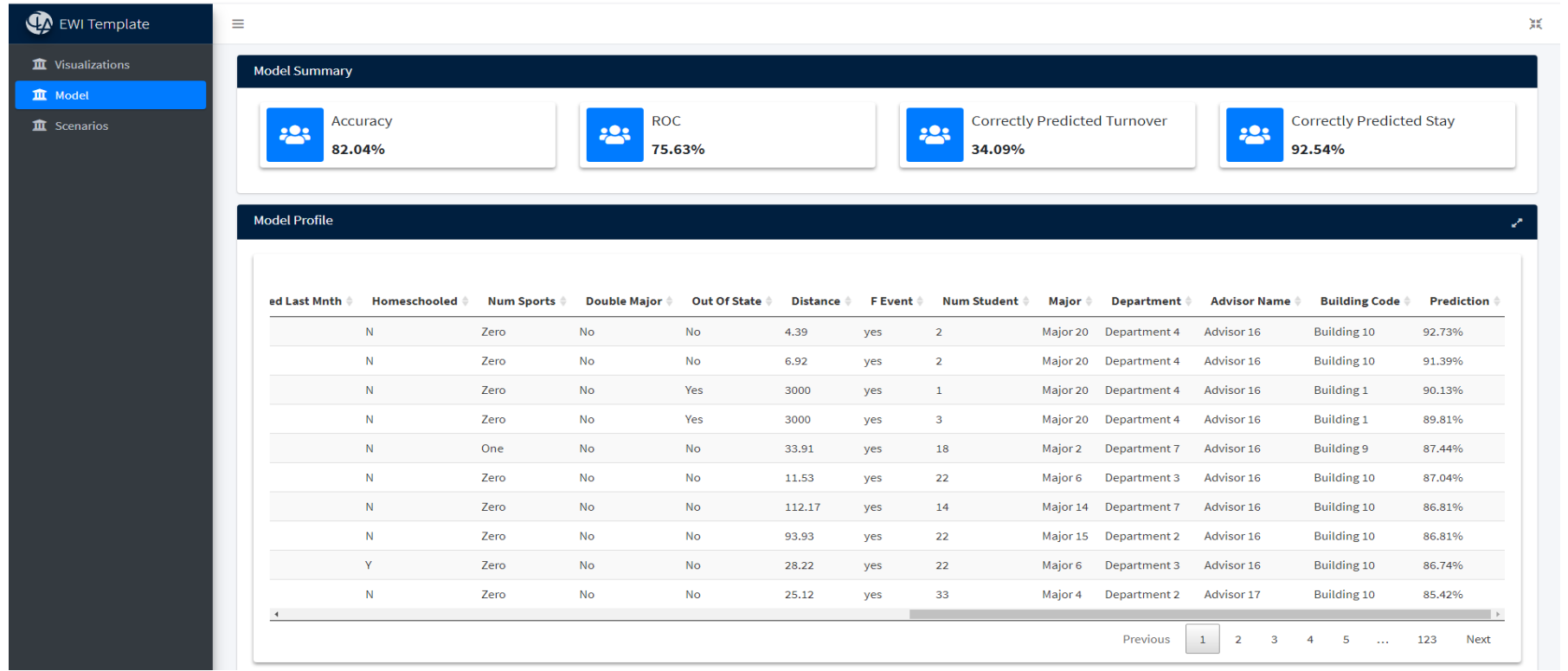




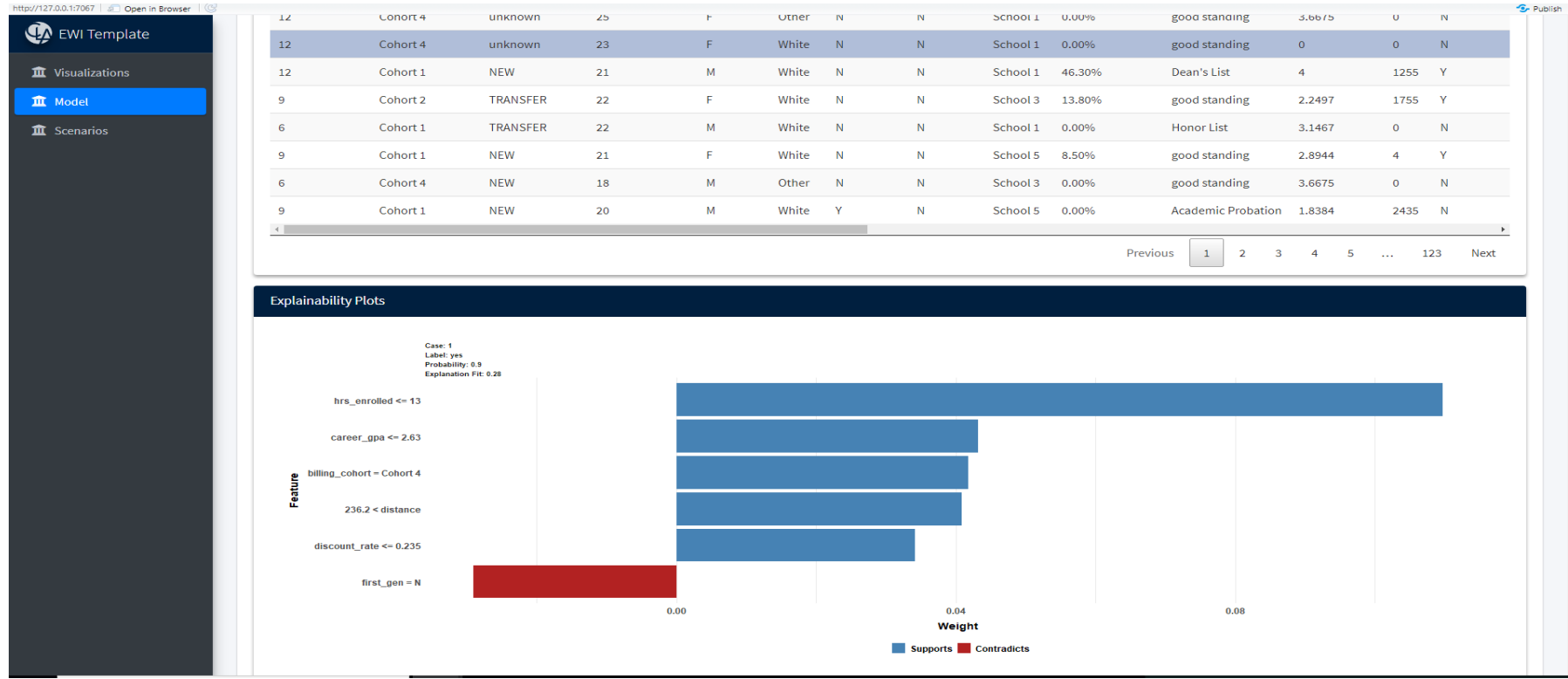
# Examples: Visualization Tab



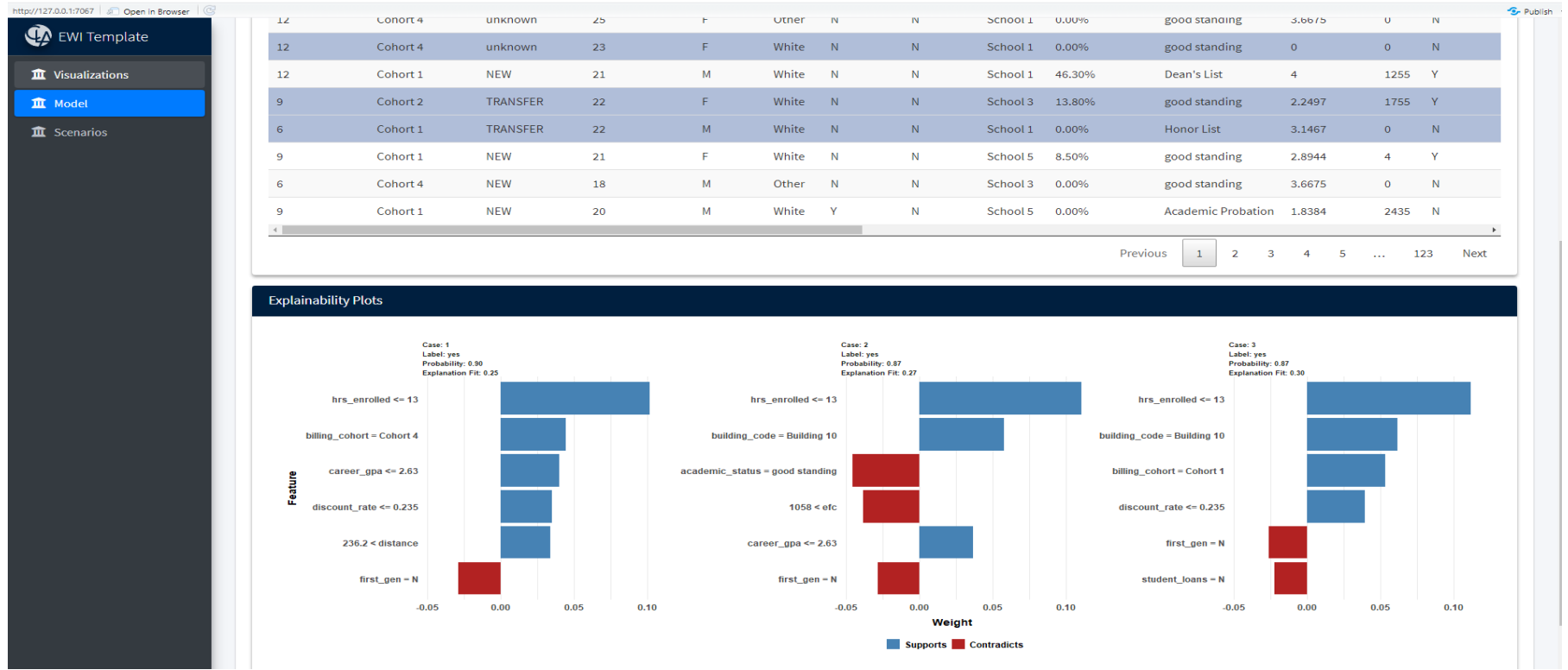
# Examples: Model Deep Dive



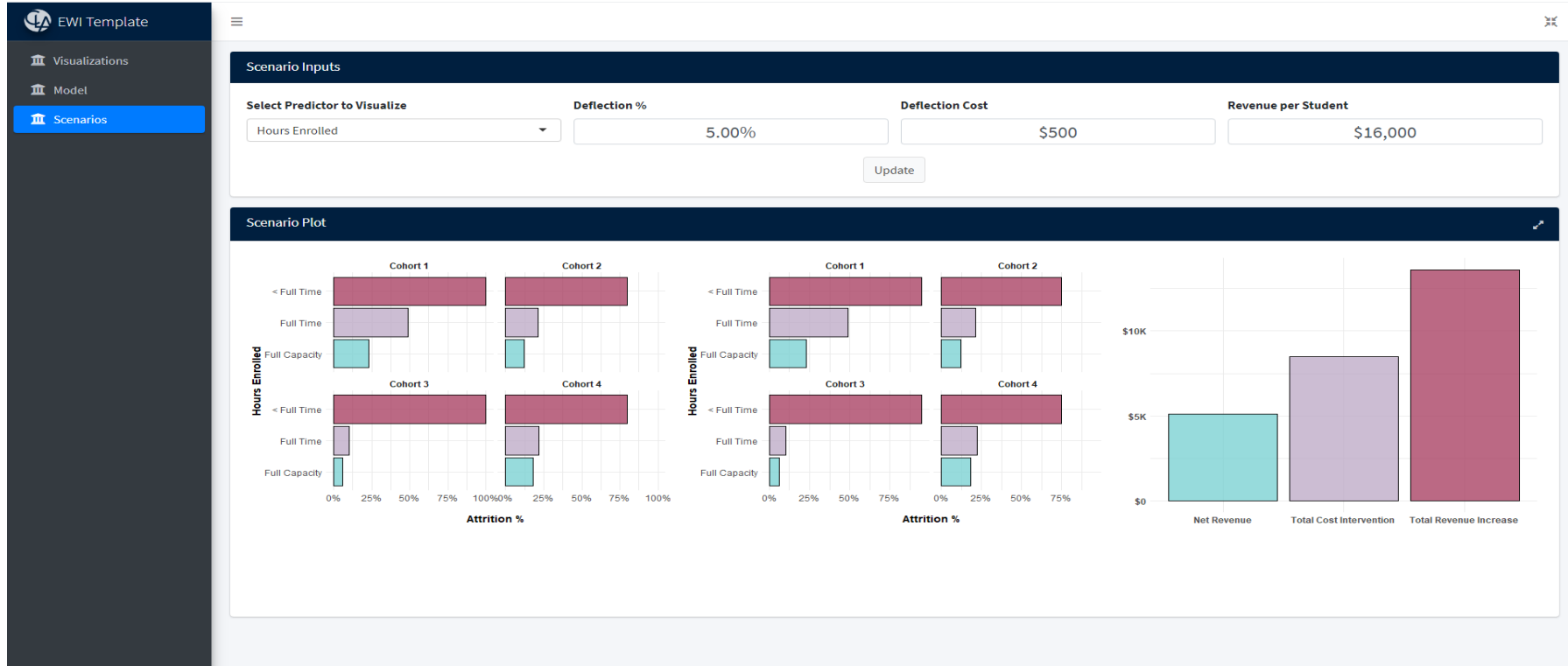
# Examples: Model Deep Dive



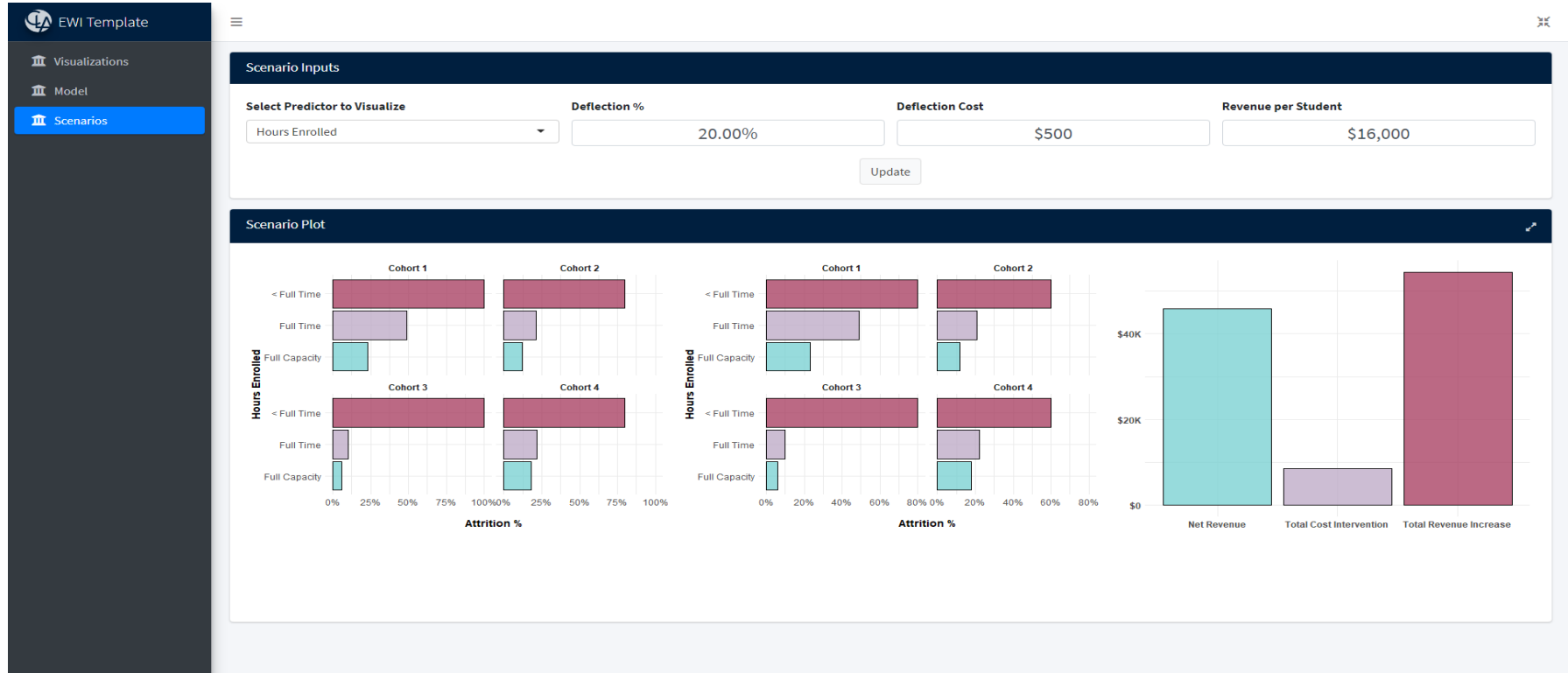
# Examples: Model Deep Dive



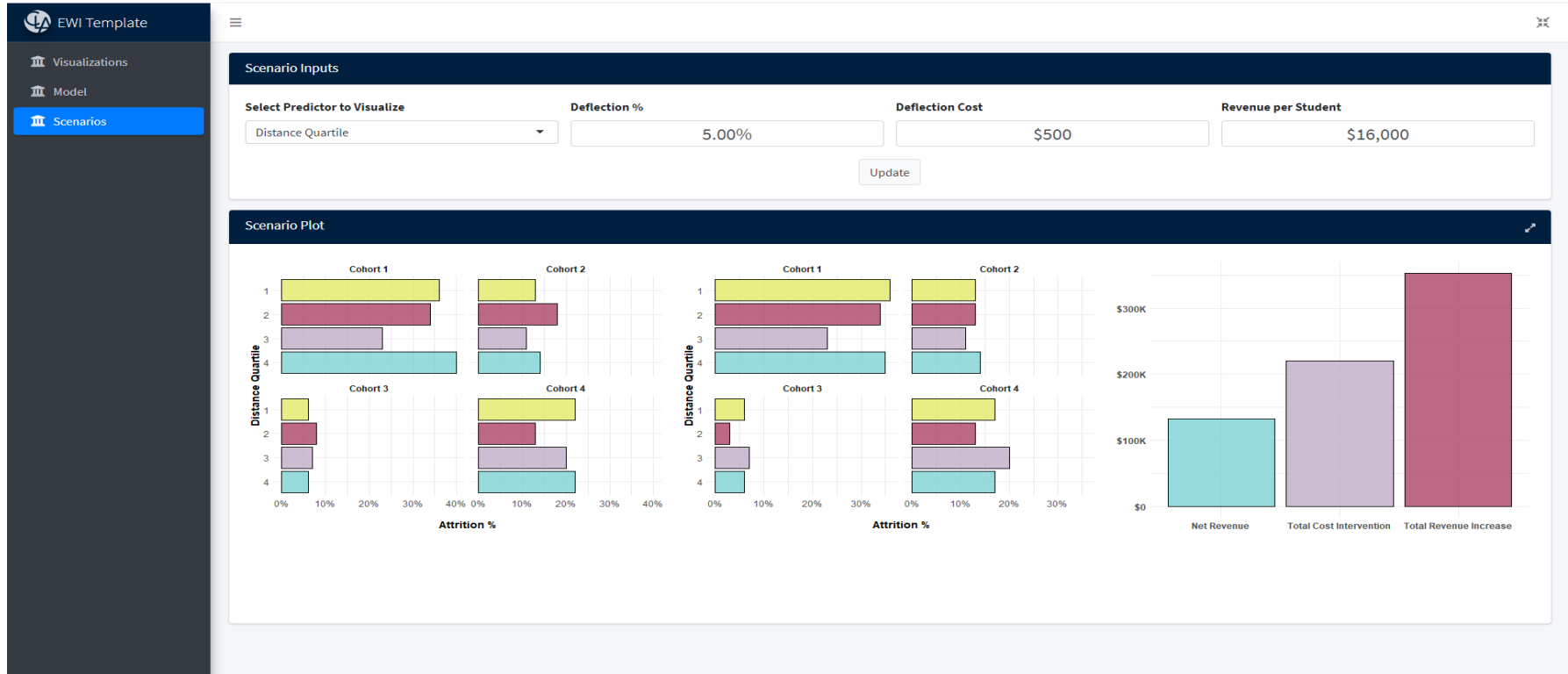
# Examples: Scenario Modeling



# Examples: Scenario Modeling

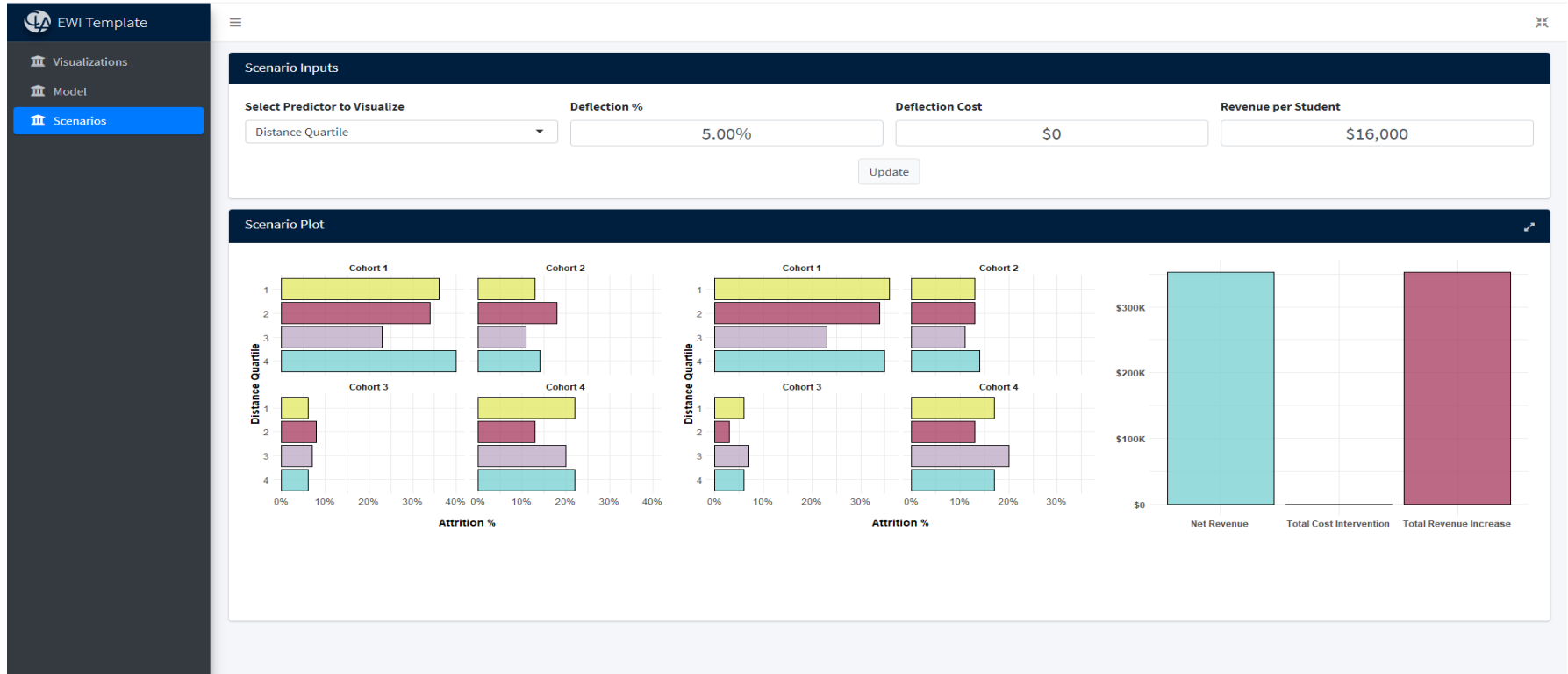


# Examples: Scenario Modeling





# Examples: Scenario Modeling



Ask your hardest questions!!!

Ready...Set...Go...!



Matthew Lang  
Principal, Digital Transformation  
317-569-6184  
Matthew.Lang@CLAconnect.com

Spencer Lourens  
Data Science Manager, Digital Transformation  
317-569-6135  
Spencer.Lourens@CLAconnect.com



CLAconnect.com



WEALTH ADVISORY | OUTSOURCING | AUDIT, TAX, AND CONSULTING

Investment advisory services are offered through CliftonLarsonAllen Wealth Advisors, LLC, an SEC-registered investment advisor